

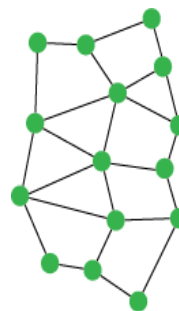


Centrum pro otázky
životního prostředí
Univerzita Karlova v Praze

Conference to create a Regional Centre for Expertise on ESD in the Czech Republic

10 February 2011

Jana Dlouhá



MOSUR

**MEZIOBOROVÁ SÍŤ
UDRŽITELNÉHO ROZVOJE**

OP VK CZ.1.07/2.4.00/17.0130



MINISTERSTVO ŠKOLSTVÍ,
MLÁDEŽE A TĚLOVÝCHOVY



OP Vzdělávání
pro konkurenceschopnost

INVESTICE DO ROZVOJE VZDĚLÁVÁNÍ



The Eastern Bloc – former USSR and its satellites

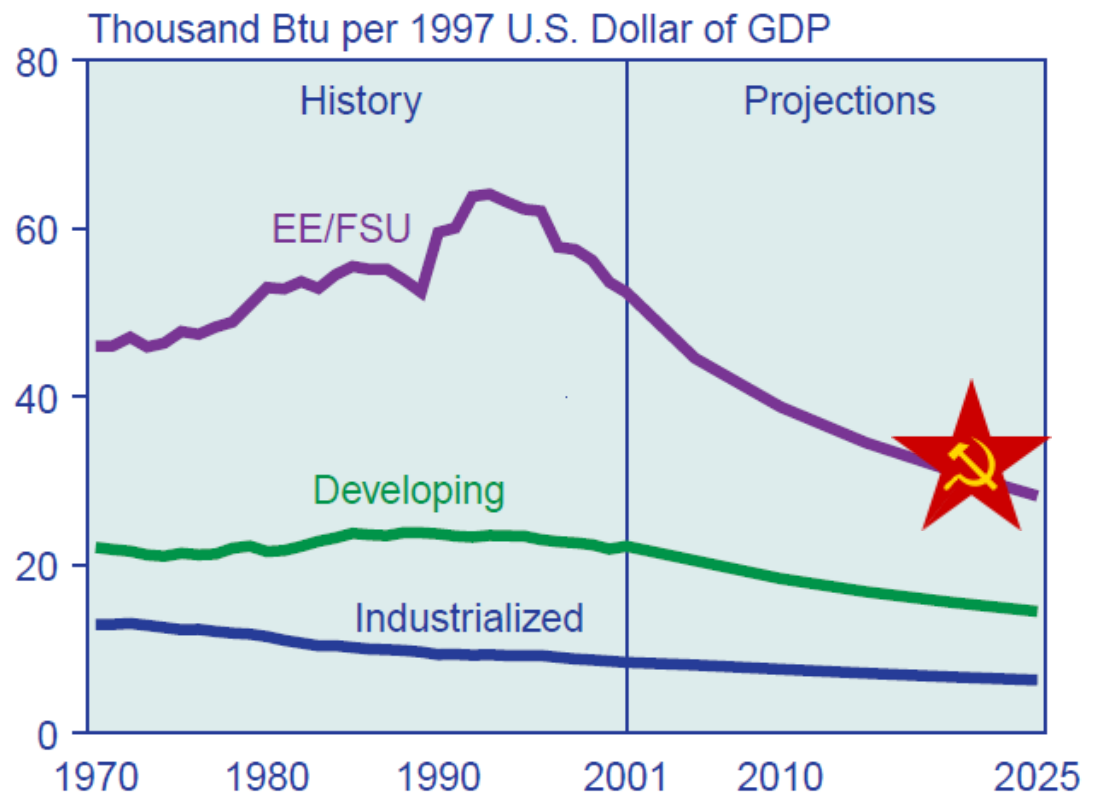
Source: Wikimedia Commons

Energy intensity – CEE compared to other regions

According to the United States Department of Energy, the Communist states maintained a much higher level of energy intensity than either the Western nations or the Third World – after 1970.

Energy Intensity by Region, 1970-2025

Source: EIA, International Energy Outlook 2004; Wikimedia Commons



UNEP Atlas of Changing Environment

Google Earth – Environmental hotspots


Tato stránka je v jazyce angličtina Chcete ji přeložit? Přeložit Ne Možnosti

UNEP/GRID-Sioux Falls Global Environmental Alert Service Atlas of Our Changing Environment

[Home](#) > [Atlas](#) > Atlas Hotspot

The Black Triangle

Germany, Czech Republic



→ View Large Image → View Large Image

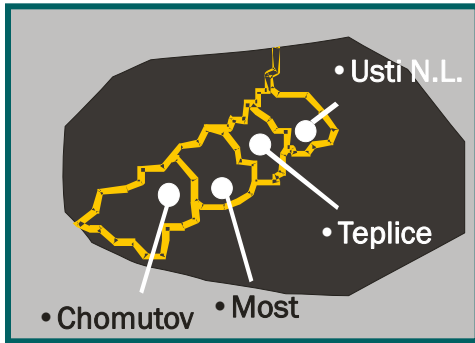
Overview Downloads

Downloads

- 03may2000.tif 16,9/49,4 MB, Zbývá: 4 ...
- world_cafe_magic.jpg
- _principles.jpg
- 7-principles-world-c...jpg
- the_world_cafe.jpg

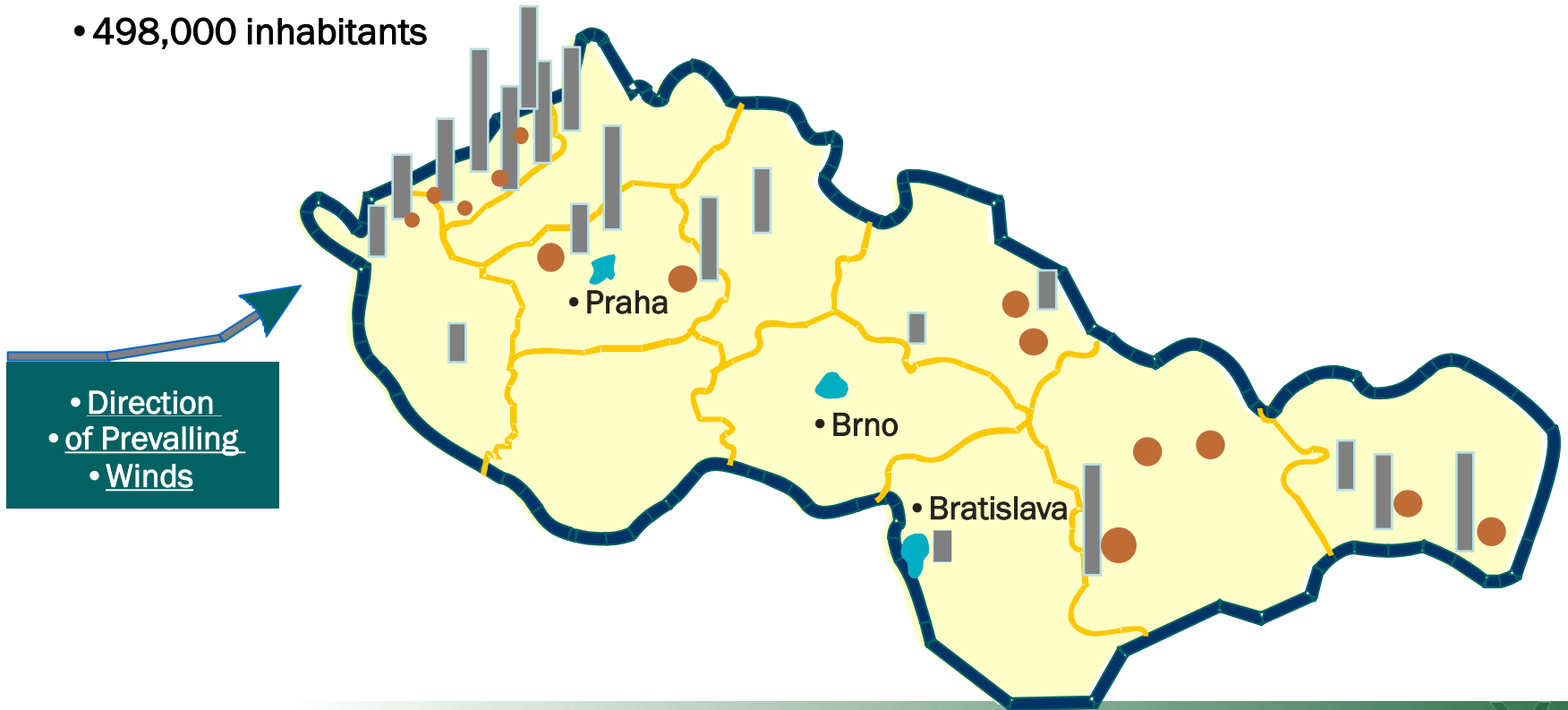
↓ Zobrazit veškeré stahování...

• Mining Districts



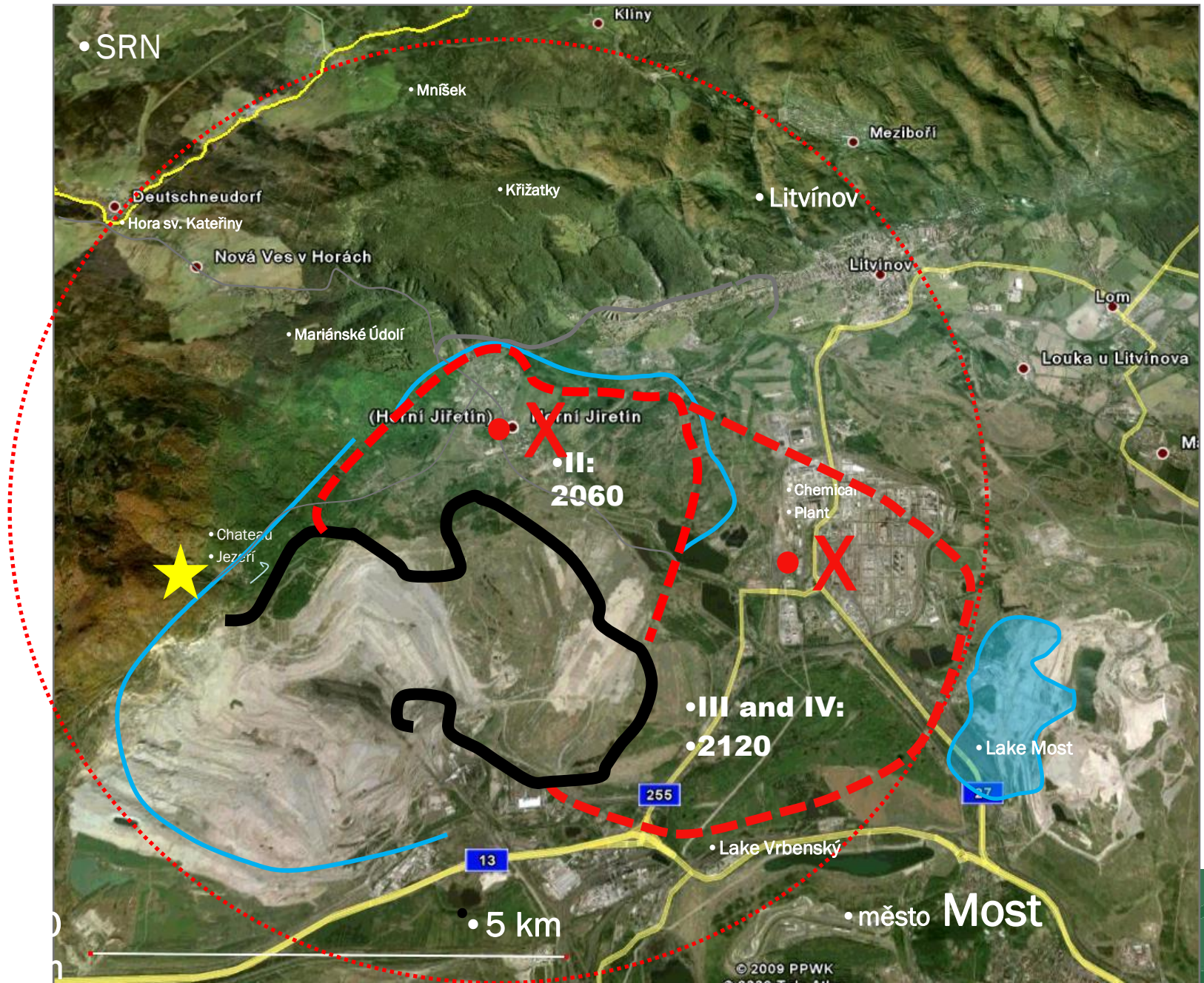
• 498,000 inhabitants

DISTRIBUTION OF THE MAIN EMISSION CENTRES IN CZECHOSLOVAKIA



• Direction
• of Prevalling
• Winds

North Most District, ČSA mine – breaking TEL



Changing science model

Mode 1 – abstract knowledge

Transfer of expertise and technology into practice

Higher education institutions – Ivory Tower model

Mode 2 – socially relevant knowledge

Knowledge assists social transformation

Innovation potential for technology

Changing science paradigms – CR:

Often not reflected by professionals

Not discussed by policy makers

UNECE Strategy for ESD, 2005

Analysis of Central and Eastern Europe

ESD National Implementation Reports, 2010

Similar challenges in the field of ESD as West

- Difference: participation in democratic decision-making'**
- Rated the lowest in the CEE region and among the highest in the EU/West**

Challenges on HE level

„Third role“ of universities:

social involvement, university outreach

Requires deep changes (Tilbury, 2011):

participative, active approaches

values, visions, systemic thinking

tradition vs innovation ...

social learning

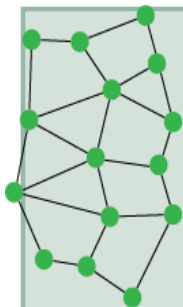
Social learning model in higher education ***(Lave and Wenger, 1991)***

learning in a close relationship with one's
position in the **world of social affairs**

an ability to act in the environment according
to **intrinsic norms and customs**

competence is negotiated through **experience**
of direct participation

situational understanding, critical thinking
and development of **action competence**



MOSUR

**MEZIOBOROVÁ SÍŤ
UDRŽITELNÉHO ROZVOJE**

OP VK CZ.1.07/2.4.00/17.0130

Thank you

Jana Dlouhá

Jana.Dlouha@czp.cuni.cz

Charles University Environment Center

<http://www.czp.cuni.cz/>

<http://envigogika.cuni.cz/>

<http://www.enwiki.cz/>